



**AMES
GOLDSMITH**
Corp.

DEVELOPMENT PRODUCT

Copper Powder Type C1-1000

GENERAL DESCRIPTION

High density mono-dispersed 1 micron Cu powder.
Excellent oxidation resistance

APPLICATIONS

Thick film paste systems for BME MLCC inner electrodes and terminations, and other conductive polymer systems.

TYPICAL PROPERTIES

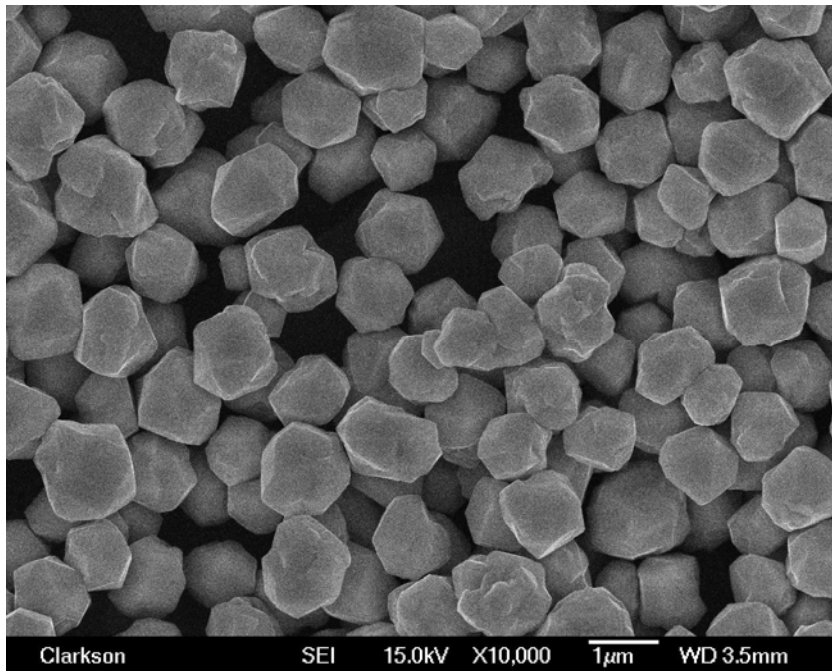
Physical Data:

Tap Density:	3.5-5.0 g/cm ³
Surface Area:	0.8-1.50 m ² /g
Loss on Drying: (1 hour @ 110°C in air)	<0.1 %

Particle Size Distribution:

D10	0.8 μm
D50	1.4 μm
D90	2.5 μm

PSD determined by Microtrac



Released: 2/09

21 Roger Street, Glens Falls, NY 12801
TEL: (518)-792-5808 FAX: (518)-792-1034
www.amesgoldsmith.com
Email: sales@amesgoldsmith.com



The statements and data contained herein are considered to be accurate and have been determined by Ames Goldsmith using commonly accepted methods. Ames Goldsmith makes no warranty with respect to the information in whole or in part. The use and application of such information is at the user's own discretion and risk, without any liability on the part of Ames Goldsmith. The physical and chemical data reported is representative of our standard process. Ames Goldsmith has the expertise to modify our processes to provide a product that best suits your application.