



**AMES  
GOLDSMITH**  
Corp.

**ELECTRONIC MATERIALS**

**Silver Powder Type LCP-15**

**GENERAL DESCRIPTION**

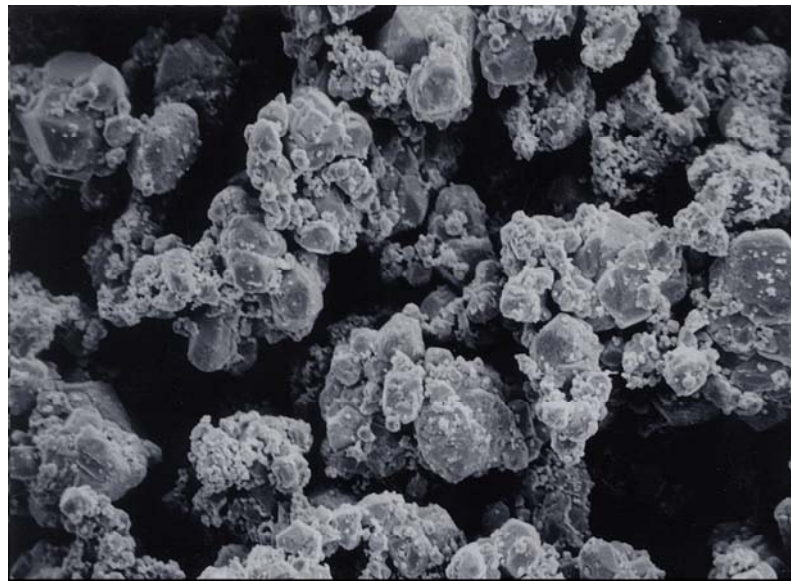
Largest of the LCP Series Powders.

**APPLICATIONS**

Powder Metallurgical.

**TYPICAL PROPERTIES**

<b>Physical Data:</b>		<b>Particle Size Distribution:</b>
Tap Density:	3.0 - 4.0 g/cm <sup>3</sup>	NT
Scott Density:	35.0 - 50.0 g/in <sup>3</sup>	
Surface Area:	0.05 - 0.25 m <sup>2</sup> /g	
Fisher Sub Sieve Sizer:	10- 15 μm	
Loss on Drying: (1 hour @ 110°C in air)	<0.1%	
Loss on Ignition: (1 hour @ 538°C in air)	<0.15%	
		PSD measured by Microtrac S3000



Ames Goldsmith 10μm 15kv 2.5kx

Released: 08/03

21 Roger Street, Glens Falls, NY 12801  
 TEL: (518)-792-5808 FAX: (518)-792-1034  
[www.amesgoldsmith.com](http://www.amesgoldsmith.com)  
 Email: [sales@amesgoldsmith.com](mailto:sales@amesgoldsmith.com)



The statements and data contained herein are considered to be accurate and have been determined by Ames Goldsmith using commonly accepted methods. Ames Goldsmith makes no warranty with respect to the information in whole or in part. The use and application of such information is at the user's own discretion and risk, without any liability on the part of Ames Goldsmith. The physical and chemical data reported is representative of our standard process. Ames Goldsmith has the expertise to modify our processes to provide a product that best suits your application.